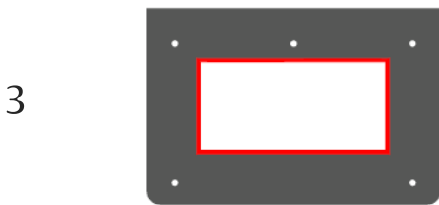


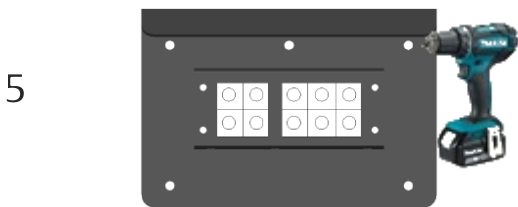
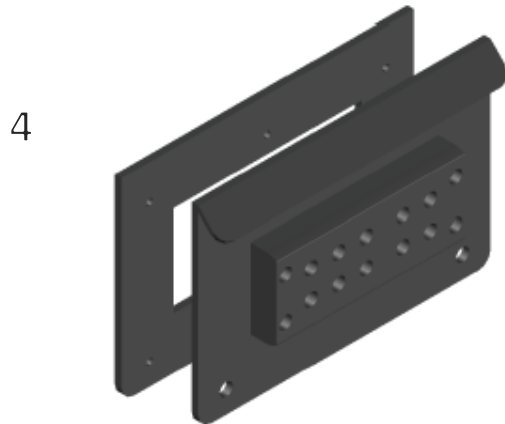
Use the EPD'm gasket to mark where the wall hole should be placed,  
(Verify before drilling that there is nothing that can be damaged by the impact of the drilling)



Cut out based on your selection, repeat on the inside.  
(Verify before drilling that there is nothing that can be damaged by the impact of the drilling/sawing)



Use EDM packing or sealant as needed



Mount the wall plate with a suitable screw over the gasket or gasket compound

Use the holes that create an even distribution between wall and slab. Cross the screws so that there is an even distribution of pressure so that the gasket/gasket compound is evenly distributed.

**Note:**  
It is the installer's responsibility to ensure that the product is correctly installed and weatherproofed.

Appropriate tools



Dense mass || If necessary



Fasteners || Use appropriate fasteners depending on the wall

